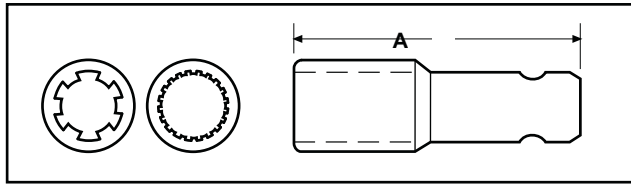
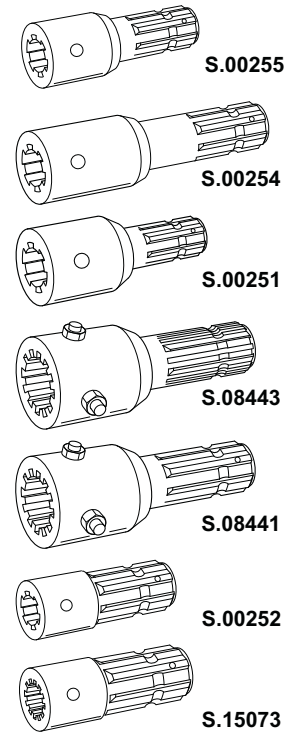


PTO Adaptors



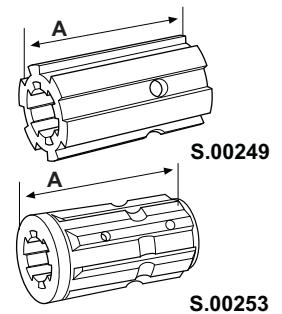
Adaptor Type	Female Spline		Male Spline		Increases PTO Shaft Length by	Overall Length	Part Number
	Ø F		Ø M				
Extension Adaptors	1 3/8"	x 6	1 3/8"	x 6	4"	5 3/4"	S.00255 S.00254
					7"	9 7/16"	
Universal Reducer	1 3/8"	x 6	1 1/8"	x 6	2 7/8"	5 3/8"	S.00251
Converters	1 3/4"	x 20	1 3/8"	x 6	5"	7 3/8"	S.08443 S.08441
				x 21			
Heavy Duty Increases	1 1/8"	x 6	1 3/8"	x 6 x 21	2 3/4" 3"	4 3/4"	S.00252
Adaptor Assembly Fits Compact Tractors	1"	x 18	1 3/8"	x 6	3"	5"	S.15073



Sleeve Increases

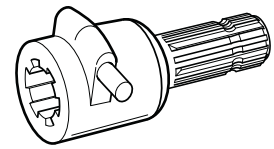
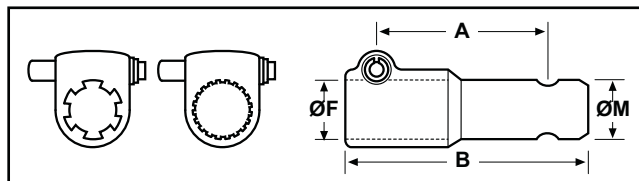
Female Spline		Male Spline		Overall Length A	Part Number
Ø F		Ø M			
1 1/8"	x 6	1 3/8"	x 6	2 3/16" 3 3/16"	S.00249 S.00253*

*Less S.00248 Roll Pin



Quick Disconnect Push Pin Adaptors

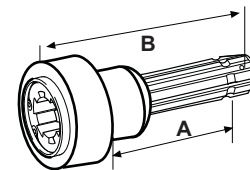
Quick Release Type



Female Spline Ø F	Male Spline Ø M	Increases P.T.O. Shaft Length by	Overall Length	Quick Release Type Part Number	
				Standard Up to 70 h.p	Heavy Duty Over 70 h.p
1 1/8" x 6	1 3/8" x 6	4 5/16"	6 1/2"	S.15720	-
1 3/8" x 6	1 3/8" x 6	4 5/16"	6 1/2"	S.03737	S.15901
	1 3/8" x 21	4 3/4"		S.13393	S.15903
	1 1/8" x 6	5 1/8"		S.15678	-
1 3/8" x 21	1 3/8" x 6	4 5/16"	6 1/2"	S.13380	S.15865
	1 3/8" x 21	4 3/4"		S.03740	S.15907
	1 1/8" x 6	5 1/8"		S.15727	-
1 3/4" x 6	1 3/8" x 6	5"	7 7/8"	-	S.16245
	1 3/8" x 21	5 1/2"		-	-
1 3/4" x 20	1 3/8" x 6	5 1/2"	7 7/8"	-	S.16247
	1 3/8" x 21	5 1/2"		-	-

Quick Disconnect Adaptor

Rotating Lock Collar Type -
Up to 75hp
Black

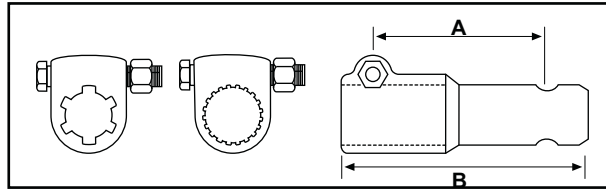


Female Spline Ø F	Male Spline Ø M	Increases P.T.O. Shaft Length by	Overall Length	Quick Release Type Part Number	
				Standard Up to 70 h.p	Heavy Duty Over 70 h.p
1 3/8" x 6	1 3/8" x 21	3 1/2"	6 1/2"	S.13377	-
1 3/8" x 21	1 3/8" x 21	3 1/2"	6 1/2"	S.13379	-

Bolt Adaptors

Bolt Type



- + 1 Bolt
- * 1 Allen Head Bolt
- ** 2 Allen Head Bolts

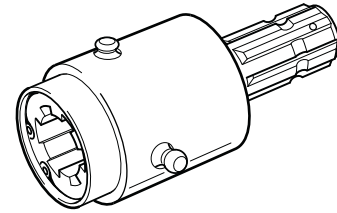


Female Spline Ø F	Male Spline Ø M	Increases P.T.O. Shaft Length by		Overall Length		Bolt Type Part Number	
		A ins	B ins	Standard Up to 70 h.p	Heavy Duty Over 70 h.p		
1 3/8" x 6	1 3/8" x 6	4 5/16"	6 1/2"	S.03741	S.15902		
	1 3/8" x 21	4 3/4"		S.03742	S.15904		
	1 1/8" x 6	5 1/8"		-	-		
1 3/8" x 21	1 3/8" x 6	4 5/16"		S.03743+ S.13381*	S.15866		
	1 3/8" x 21	4 3/4"		S.03744	-		
	1 1/8" x 6	5 1/8"		-	-		
1 1/8" x 6	1 3/8" x 6	4 5/16"	6 1/2"	-	-		
	1 3/8" x 21	4 3/4"		-	-		
	1 1/8" x 6	5 1/8"		S.15723	-		
1 3/4" x 6	1 3/8" x 21	5 1/2"	7 7/8"	-	-		
	1 3/8" x 6	5"		-	S.16249		
1 3/4" x 20	1 3/8" x 21	5 1/2"		S.13372*	S.13371**		
	1 3/8" x 6	5"		S.13374*	S.16251+ S.13373**		


Special Adaptors

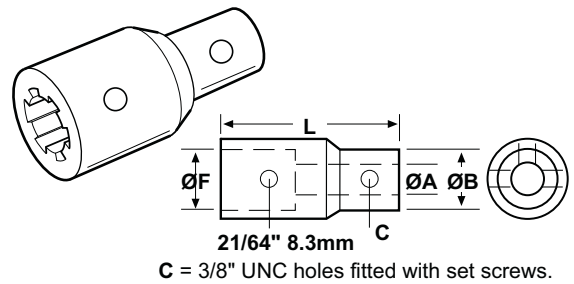
PTO Overrunning Coupler - Black

Female Spline ins		Male Spline ins		Increases P.T.O Shaft Length by ins	Part Number
1 1/8"	x 6	1 1/8"	x 6	4 3/8"	S.13376
1 1/8"		1 3/8"			S.15451
1 3/8"		1 1/8"			S.13375
1 3/8"		1 3/8"			S.15514



General Purpose and Pump Adaptors

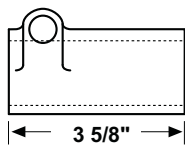
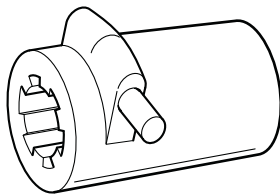
Female Spline Ø F ins		Ø A ins	Ø B ins	Overall Length L ins	Part Number
1 3/8"	x 6	5/8"	1 3/8"	4 5/8"	S.04981
		3/4"			S.04982
		1"			S.04984



Push Button Sleeve

S.04467

Ø F = 1 3/8" x 6 Splines



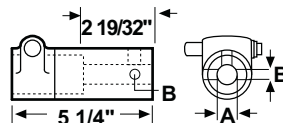
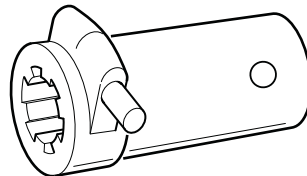
Quick Release Adaptor

S.15229


Ø F = 1 3/8" x 6 Splines

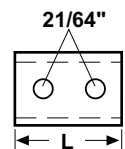
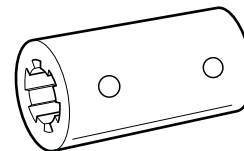
Ø A = .944"/.946"

Ø B = Fitted with set screws



Splined Couplings

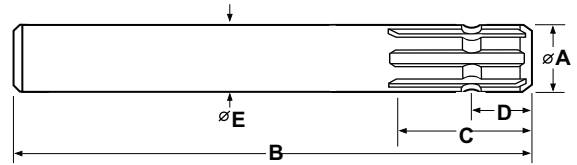
Female Spline ins		Overall Length L ins	Part Number
1 1/8"	x 6	2 3/4"	S.00286
1 3/8"		3 3/4"	S.00287
1 3/4"	x 20		S.15731
			S.15733



Splined Shafts

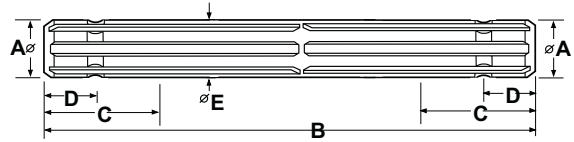
Splined Shafts - 6 Spline

Spline Ø	No. of Splines	B	C	D	E	Part Number
1 3/8"	6	5 7/8"	2 61/64"	1 1/2"	1 3/8"	S.16426
		13 3/4"				S.16427





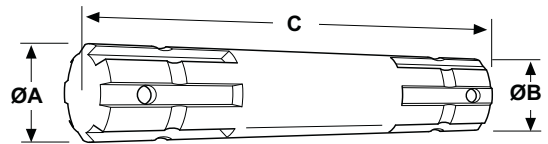
Splined Shafts - 6 Spline

Spline Ø	No. of Splines	B	C	D	E	Part Number
1 3/8"	6	11 13/16"	3"	1 1/2"	1 3/8"	S.16428
		5 7/8"				S.16615





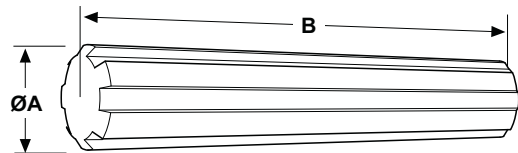
Extension Shafting - 6 Spline

Ø A		Ø B		Length C	Part Number
ins		ins			
1 3/8"	x 6	1 1/8"	x 6	9"	S.00278
		1 3/8"			S.00279



Repair Shafting - 6 Spline

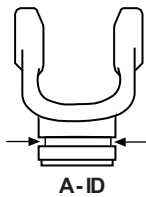
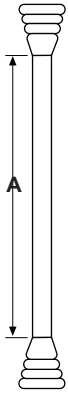
Ø A		Length B	Part Number
ins		ins	
1 3/8"	x 6	10"	S.00283



Easy Lock Safety Guards



- New Series of High Specification Safety Guards
- Approved to CEN 1152
- Fits North American and Metric Drive Shafts



A	250	350	450		
29.50" 750mm	S.59605	S.59613	S.59621		
39.25" 1000mm	S.59606	S.59614	S.59622		
51.125" 1300mm	S.59607	S.59615	S.59623		
BEARING KITS (w/ Nipple Locks S.56509 x 2, Bearing Rings x 2)					
TYPE A - 250 - NORTH AMERICAN					
STOCK NO	SERIES	GUARD	A - ID	A - ID	B - OD
S.22566	6	250	46.4mm/1.83"	46.4mm/1.83"	71.4mm/2.81"
S.22567	12, 14, 35	250	52.8mm/2.08"	52.8mm/2.08"	71.4mm/2.81"
S.22568	W	250	41.8mm/1.65"	41.8mm/1.65"	71.4mm/2.81"
TYPE A - 250 - METRIC					
STOCK NO	SERIES	GUARD	A - ID	A - ID	B - OD
S.56550	BP A1	250	34mm/1.36"	40mm/1.59"	71.4mm/2.81"
S.59635	BP A2	250	40mm/1.59"	47mm/1.87"	71.4mm/2.81"
S.59636	BP A3, A4	250	47mm/1.87"	54mm/2.10"	71.4mm/2.81"
S.56500	W 2100, 2200	250	41mm/1.63"	41mm/1.63"	71.4mm/2.81"
S.59631	W 1, 2200, 2300	250	50mm/2.00"	50mm/2.00"	71.4mm/2.81"
TYPE B - 350 - NORTH AMERICAN					
STOCK NO	SERIES	GUARD	A - ID	A - ID	B - OD
S.22569	44, 55	350	67.2mm/2.65"	67.2mm/2.65"	83.6mm/3.29"
TYPE B - 350/450 - METRIC					
STOCK NO	SERIES	GUARD	A - ID	A - ID	B - OD
S.59637	BP A5	350	54mm/2.11"	62mm/2.47"	83.6mm/3.29"
S.59638	BP A6, A7, A8	350	60mm/2.34"	68mm/2.69"	83.6mm/3.29"
S.59639	BP A9, A10	450	68mm/2.69"	80mm/3.17"	103mm/4.05"
S.59632	W 11, 220, 240, 2300, 2400, 2500	350	63mm/2.46"	63mm/2.46"	83mm/3.27"
S.59633	W 2600	450	82mm/3.26"	82mm/3.26"	103mm/4.05"
WIDE ANGLE GUARDS					
A	2380 SERIES	2480 SERIES	S.56509 (Use 2 per Guard)		
29.50" 750mm	S.59624	S.59628			
39.25" 1000mm	S.59625	S.59629			
BEARING KITS (w/ Nipple Locks S.56509 x 2)					
	STOCK NO	SERIES	A - ID	A - ID	B - OD
	S.59632	W 2480	63mm/2.5"	63mm/2.5"	
	S.59644	W 2380	50mm/1.97"	50mm/1.97"	