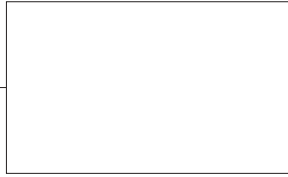


Page No.

1



2

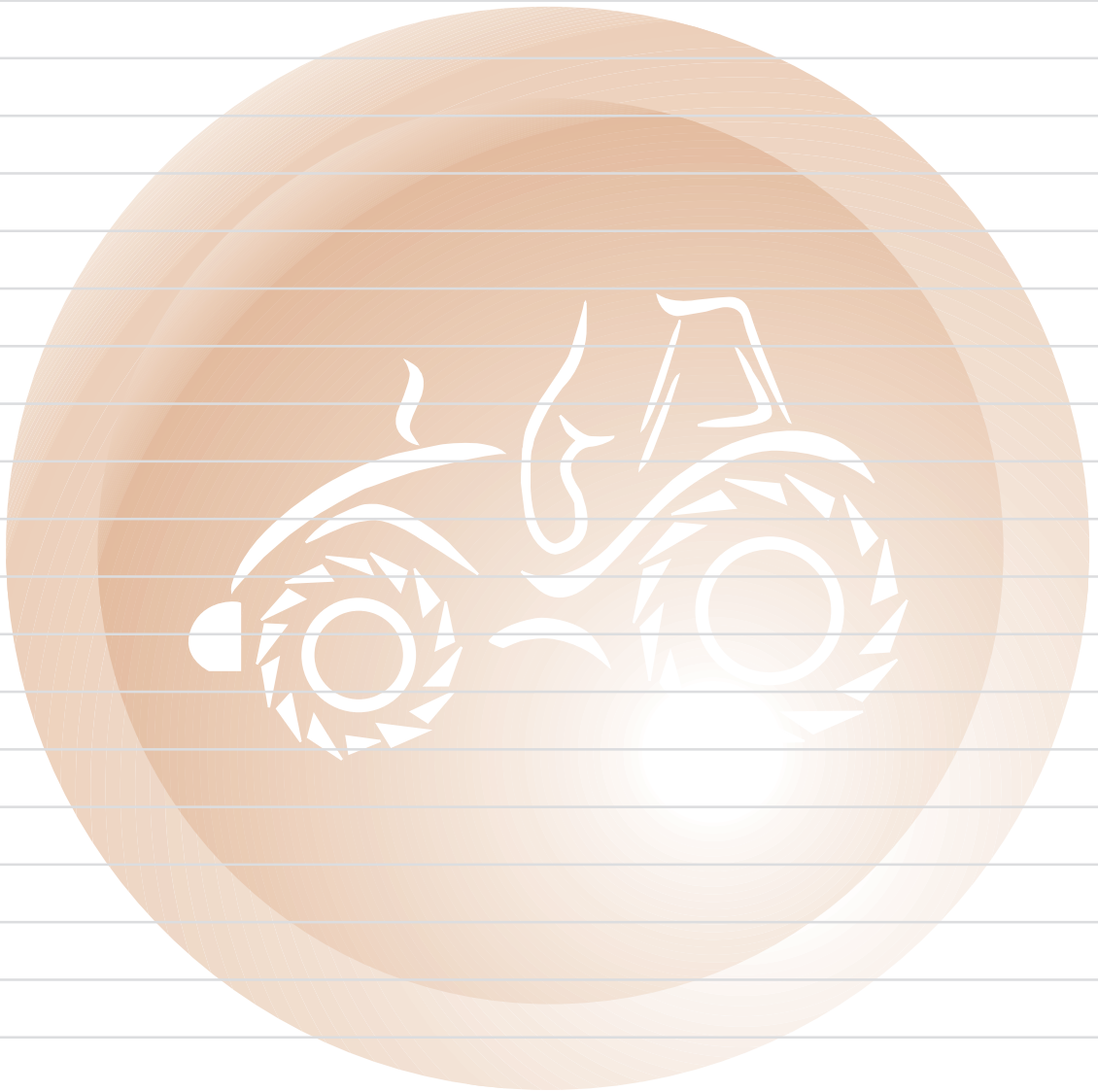


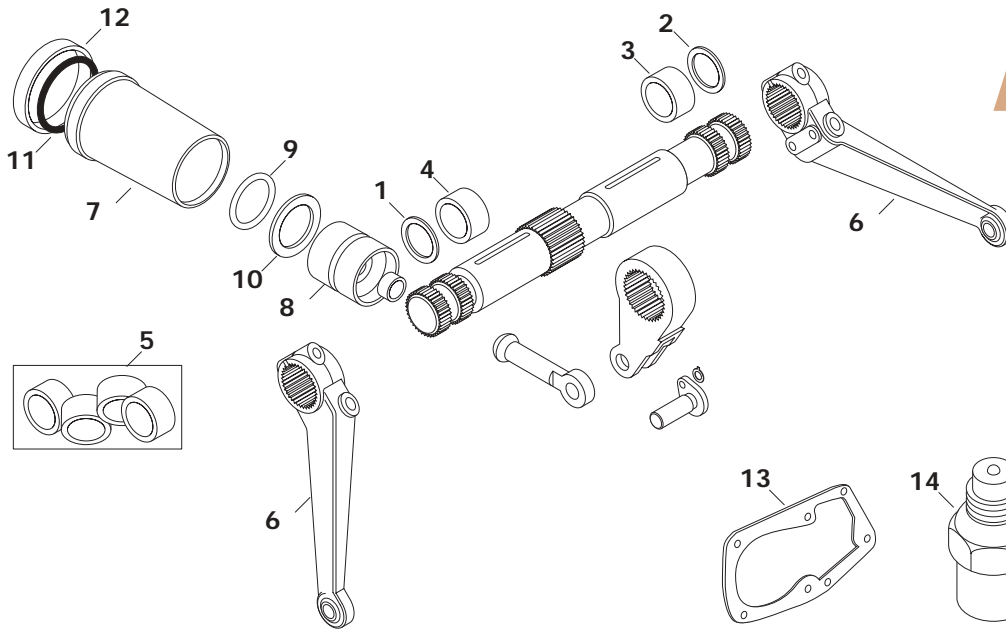
E & O.E.

Please see Index for alternative O.E. part numbers.

These parts are Sparex parts and are not manufactured by the Original Equipment Manufacturer. Original Equipment Manufacturers names, part numbers and descriptions are quoted for reference purposes only.

NOTES





FT7

Sparex Replacement
Spare Parts

Hydraulics

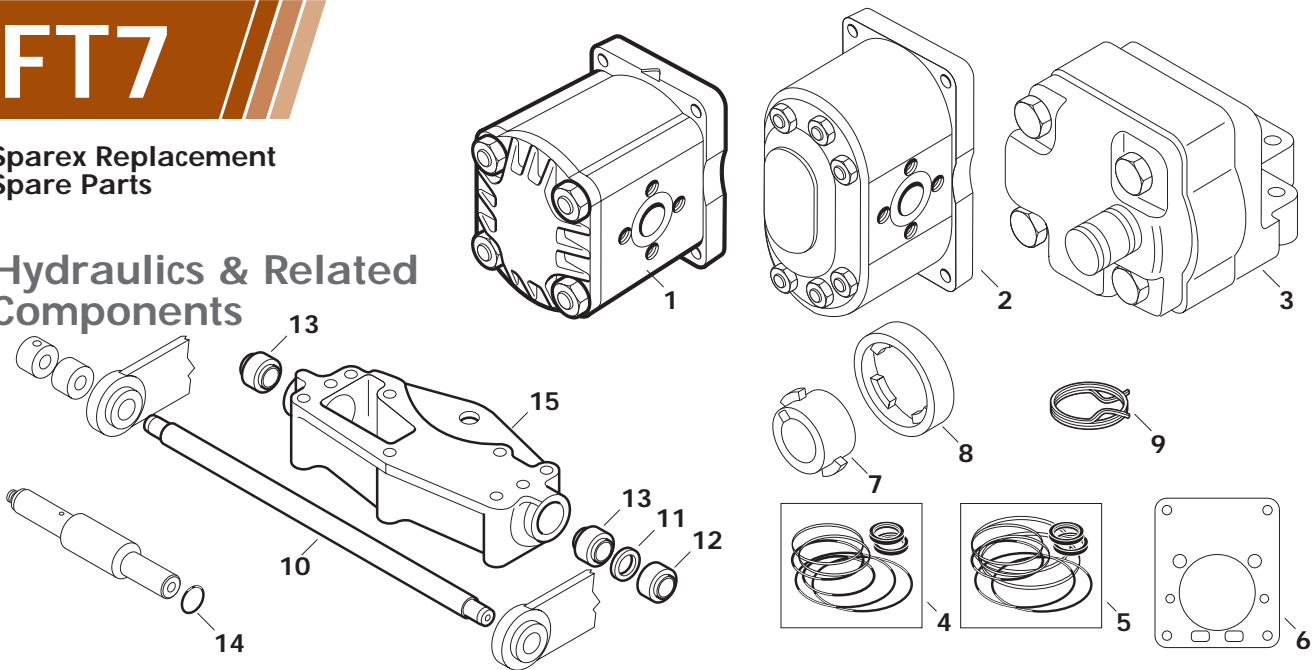
	SPAREX No.	DESCRIPTION	EQUIVALENT	TRACTOR MODEL
1	S.1955	O Ring Seal - RH	14471280	315, 415, 446, (450 Italian), (450 Romanian), 480, 480S, 500, 500S, 540 540S, 550, 640
2	S.10431	O Ring Seal - LH	14471180	446, 480S, 500S, 540, 540S, 640
2	S.10430	O Ring Seal - LH	14471080	315, 415, , (450 Italian), (450 Romanian), 480, 500, 550
3	S.59118	Spacer - LH	4981489	450, 480, 500, 540, 550, 600, 640
4	S.59119	Spacer - RH	4981488	450, 480, 500, 540, 550, 600, 640
5	S.62271	Bush Repair Kit	4955420 + 4955421	450, 480, 500, 540, 550, 600, 640
6	S.62324	Top Lift Arm (Coarse Spline)	4988631	450, 480, 500, 540, 550, 600, 640
6	S.62270	Top Lift Arm (Fine Spline)	4981483	450, 480, 500, 540, 550, 600, 640
7	S.59123	Hydraulic Cylinder (90mm Bore)	4982380 5105663	446, 450, 480
7	S.59124	Hydraulic Cylinder (95mm Bore)	5105648	570, 580, 670, 680, 780
8	S.59125	Hydraulic Piston	4982383	446, 450, 480
8	S.59126	Hydraulic Piston	4981457	570, 580, 670, 680, 780
9	S.6798	O Ring	14472181 14472180	450, 480, 500, 540
9	S.4431	O Ring	14472380	550, 580, 640, 650, 780, 880, 880/5, 980
10	S.62441	Back up Ring - Rear	5105648	450, 480, 500, 540
10	S.62443	Back up Ring - Rear	5106297	550, 580, 640, 650, 780, 880, 880/5, 980
11	S.6797	O Ring	14472680	450, 480, 500, 540
11	S.62442	O Ring	14472880	550, 580, 640, 650, 780, 880, 880/5, 980
12	S.62439	Back up Ring - Front	5105664	450, 480, 500, 540
12	S.62440	Back up Ring - Front	4999412	550, 580, 640, 650, 780, 880, 880/5, 980
13	S.62438	Hydraulic Lift Cylinder Cover Gasket	574923	450, 480, 500, 540, 550, 600, 640, 650
14	S.62272	Hydraulic Relief Valve	583849	446, 450, 480, 500, 540, 550, 600, 640, 650, 750
15	S.3161	Seal Kit - Female Coupling	86508779	G170, G190, G210, G240, M100, M115, M135, M160

Please see Index for alternative O.E. part numbers.

These parts are Sparex parts and are not manufactured by the Original Equipment Manufacturer. Original Equipment Manufacturers names, part numbers and descriptions are quoted for reference purposes only.

Sparex Replacement Spare Parts

Hydraulics & Related Components

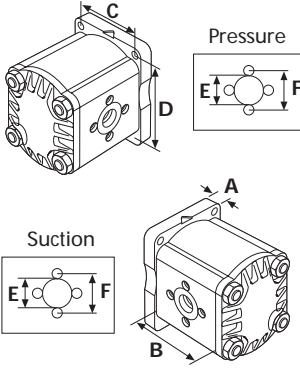
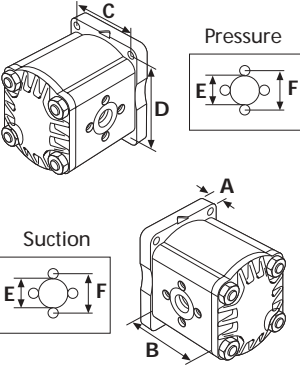
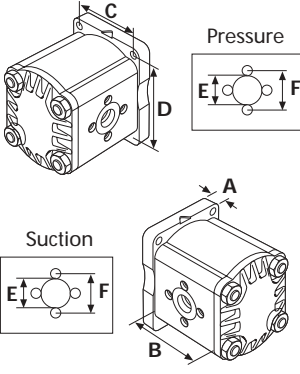
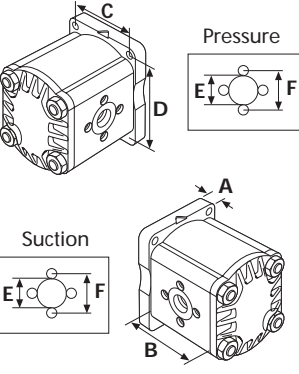
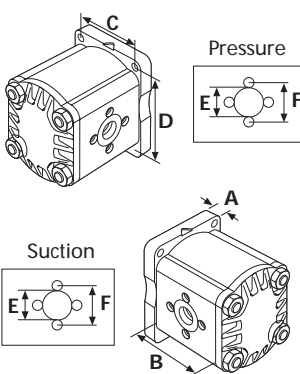
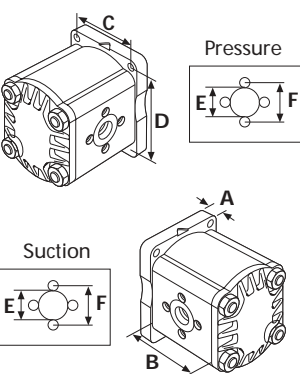
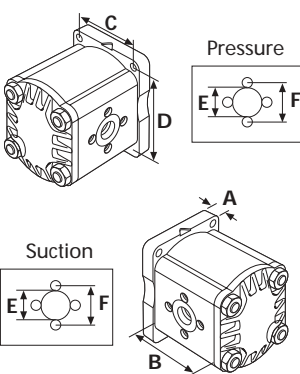


SPAREX No.	DESCRIPTION	EQUIVALENT	TRACTOR MODEL
1	S.62216 Main Hydraulic Pump Clockwise rotation - 18L/min	568162	315, 411R, 415
1	S.62217 Main Hydraulic Pump Clockwise rotation - 25L/min	5129481 5179722	450, 460, 470, 480, 500, 540
1	S.62218 Main Hydraulic Pump Clockwise rotation - 33L/min	5129486 5179728	450, 460, 470, 480, 500, 540
1	S.62213 Main Hydraulic Pump Anti-Clockwise rotation - 25L/min	5129478 5179730	550, 600, 640, 650, 650S, 750, 750S, 850, 850S
1	S.62214 Main Hydraulic Pump Anti-Clockwise rotation - 33L/min	8273957 5179719	550, 580, 600, 640, 650, 650S, 680, 750, 750S, 780, 850, 850S, 880, 880/5 900, 980, 55-90, 60-90, 65-90, 70-90, 80-90, 85-90, All 66, 93 & 94 Series
1	S.62215 Main Hydraulic Pump Anti-Clockwise rotation - 42L/min	5129488	1000, 1180, 1280, 1380, 1580, 1880, 90-90, 100-90, 110-90, 115-90 130-90, 140-90, 160-90, 180-90
1	S.62219 Main Hydraulic Pump Clockwise rotation - 42L/min	5129493 5169041	F100, F110, F115, F120, F130, F140, L60, L65, L75, L85, L95
2	S.59117 Main Hydraulic Pump Anti-Clockwise rotation - 43L/min Crankshaft Driven Pump	1930398 8282449	1000S, 1300, 1300S
3	S.57065 Hydraulic Pump - (P.T.O. & Diff Lock)	5135305 5126478	1180, 1280, 1380, 1580, 1880, 115-90, 130-90, 140-90, 160-90, 180-90
4	S.14642 Pump - Seal Kit (Early)	8281576	Clockwise & Anticlockwise Pumps (Both OEM & Sparex Pumps)
5	S.62807 Pump - Seal Kit (Later)	5145656	Clockwise & Anticlockwise Pumps (OEM Pumps only)
6	S.62598 Gasket - Hydraulic Pump	4607590	All Hydraulic Pumps
7	S.62484 Pump Coupler	5118569	All Hydraulic Pumps
8	S.62485 Pump Hub	5118570	All Hydraulic Pumps
9	S.62223 Hydraulic Valve Control Spring	588779	411R, 415, 450, 480, 500, 540, 550, 600, 640, 650
10	S.62675 Sensor Shaft	5131268	45-66, 50-66, 55-66F, 55-76F, 55-86F
10	S.62368 Sensor Shaft	5116243	466, 566, 666, 766, 55-66, 55-90, 60-66, 60-66F, 60-76F, 60-90, 60-93 60-94, 62-86F, 65-66, 65-90, 65-93, 65-94, 70-66, 70-66F, 70-76F 70-90, 72-86, 72-93, 72-94, 80-66, 80-66F, 80-76F, 80-90, 82-86F 82-93, 82-94, 85-90, 88-93, 88-94, L60, L65, L75, L85
11	S.62369 Sensor Shaft Seal	5121123	Fits S.62368 & S.62675 Shafts
12	S.62547 Sensor Shaft Bush	5116245	Fits S.62368 & S.62675 Shafts
13	S.59127 Sensor Shaft Bearing	5116244	Fits S.62368 & S.62675 Shafts
14	S.1955 Sensor Shaft O Ring	14471280	115-90, 130-90, 140-90, 160-90, 180-90, F100, F110, F130 Versions with Electronic Lift
15	S.58952 Sensor Shaft Housing	5123848 5116242	466, 566, 666, 766, 55-66, 60-66, 60-66F, 60-76F, 62-86F, 65-66, 70-66 70-66F, 70-76F, 72-86F, 80-66, 80-66F, 80-76F, 82-86F

Please see Index for alternative O.E. part numbers.

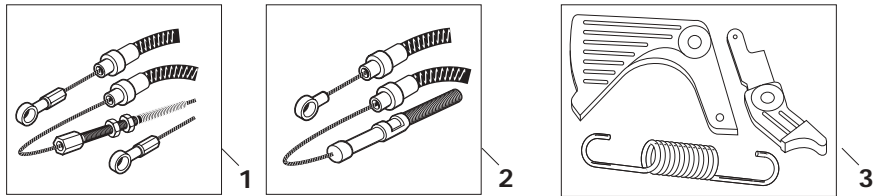
These parts are Sparex parts and are not manufactured by the Original Equipment Manufacturer. Original Equipment Manufacturers names, part numbers and descriptions are quoted for reference purposes only.

Sparex Replacement Spare Parts

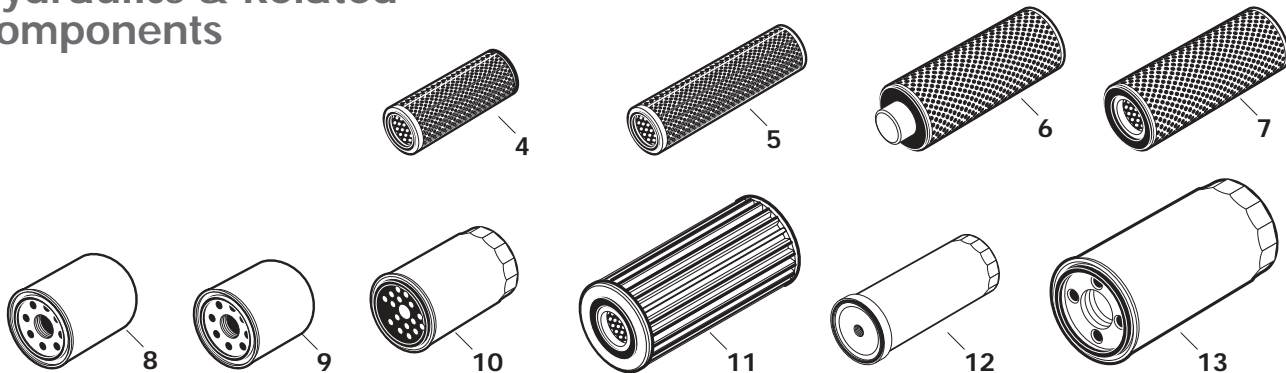
			
<p align="center">S.62213</p>	<p align="center">S.62214</p>	<p align="center">S.62215</p>	<p align="center">S.62216</p>
<p>A=19mm/ 0.75" B=58mm/ 2.28" C=70.98mm/ 2.79" D=95.81mm/ 3.77" Suction Side: E=19mm/ 0.75" F=40.5mm/ 1.59" Bolt Holes=8mm x 1.25 Thread Pressure Side: E=14.26mm/ 0.255" F=30.70mm/ 1.20" Bolt Holes=6mm x 1.2 Thread Gal. per min (Approx) = 5.5 Litres per min= 25 Counter Clockwise Rotation</p>	<p>A=19mm/ 0.75" B=67.66mm/ 2.66" C=70.98mm/ 2.79" D=95.81mm/ 3.77" Suction Side: E=19mm/ 0.75" F=40.5mm/ 1.59" Bolt Holes=8mm x 1.25 Thread Pressure Side: E=14.26mm/ 0.255" F=30.70mm/ 1.20" Bolt Holes=6mm x 1.2 Thread Gal. per min (Approx) = 6.8 Litres per min= 31 Counter Clockwise Rotation</p>	<p>A=19mm/ 0.75" B=64.02mm/ 2.52" C=70.98mm/ 2.79" D=95.81mm/ 3.77" Suction Side: E=19mm/ 0.75" F=40.5mm/ 1.59" Bolt Holes=8mm x 1.25 Thread Pressure Side: E=14.26mm/ 0.255" F=30.70mm/ 1.20" Bolt Holes=6mm x 1.2 Thread Gal. per min (Approx) = 9.2 Litres per min= 42 Counter Clockwise Rotation</p>	<p>A=19mm/ 0.75" B=40.01mm/ 1.85" C=70.98mm/ 2.79" D=95.81mm/ 3.77" Suction Side: E=12.70mm/ 0.50" F=30.70mm/ 1.20" Bolt Holes=6mm x 1.0 Thread Pressure Side: E=12.70mm/ 0.50" F=30.70mm/ 1.20" Bolt Holes=6mm x 1.0 Thread Gal. per min (Approx) = 4.0 Litres per min= 18 Clockwise Rotation</p>
			
<p align="center">S.62217</p>	<p align="center">S.62218</p>	<p align="center">S.62219</p>	
<p>A=19mm/ 0.75" B=58mm/ 2.28" C=70.98mm/ 2.79" D=95.81mm/ 3.77" Suction Side: E=19mm/ 0.75" F=40.50mm/ 1.59" Bolt Holes=6mm x 1.0 Thread Pressure Side: E=14.21mm/ 0.55" F=30.70mm/ 1.20" Bolt Holes=6mm x 1.0 Thread Gal. per min (Approx) = 5.5 Litres per min= 25 Clockwise Rotation</p>	<p>A=19mm/ 0.75" B=58mm/ 2.28" C=70.98mm/ 2.79" D=95.81mm/ 3.77" Suction Side: E=19mm/ 0.75" F=40.50mm/ 1.59" Bolt Holes=6mm x 1.0 Thread Pressure Side: E=14.21mm/ 0.55" F=30.70mm/ 1.20" Bolt Holes=8mm x 1.25 Thread Gal. per min (Approx) = 7.3 Litres per min= 33 Clockwise Rotation</p>	<p>A=19mm/ 0.75" B=64.68mm/ 2.54" C=70.98mm/ 2.79" D=95.81mm/ 3.77" Suction Side: E=19mm/ 0.75" F=40.50mm/ 1.59" Bolt Holes=6mm x 1.0 Thread Pressure Side: E=14.21mm/ 0.55" F=30.70mm/ 1.20" Bolt Holes=8mm x 1.25 Thread Gal. per min (Approx) = 9.2 Litres per min= 42 Clockwise Rotation</p>	

Please see Index for alternative O.E. part numbers.

These parts are Sparex parts and are not manufactured by the Original Equipment Manufacturer. Original Equipment Manufacturers names, part numbers and descriptions are quoted for reference purposes only.



Hydraulics & Related Components



SPAREX No.	DESCRIPTION	EQUIVALENT	TRACTOR MODEL
1	S.62221 Hydraulic Control Cable (4 Required)	4999388	580, 680, 780, 880, 880/5, 980
2	S.62222 Hydraulic Control Cable (1 Required)	5139172	55-90, 60-90, 60-93, 60-94, 65-90, 65-93, 65-94, 70-90, 72-93, 72-94, 80-90, 82-93, 82-94, 85-90, 88-93, 88-94, 90-90, 100-90, 110-90
3	S.59128 Lever/ Spring Assembly Lift O Matic	5128640 + 5128641 + 5128638	45-66, 50-66, 55-66, 60-66, 65-66, 70-66, 80-66
4	S.76375 Hydraulic Filter	1909133	411R, 415, 460
5	S.62224 Hydraulic Filter	1909134	446, 450, 480, 500, 540, 550, 600, 640, 650, 650S, 750, 750S
6	S.76358 Hydraulic Filter	1909127	850, 850S, 900, 1000, 1000S, 1300, 1300S
6	S.62492 Hydraulic Filter	1909105	850, 850S, 1000, 1000S, 1300, 1300S
7	S.62226 Hydraulic Filter	1909106	580, 680, 780, 880, 880/5, 980
8	S.62225 Hydraulic Filter	1909130	1180, 1280, 1380, 1580, 1880, (All 66 Series except as listed below) All 90 Series
9	S.62228 Hydraulic Filter	1930299	45-66, 50-66, 55-66F, 55-76F, 55-86F
10	S.76413 Hydraulic Filter	1930986	L60, L65, L75, L85, L95
11	S.62229 Hydraulic Filter - Cartridge	1930882	F100, F110, F115, F120, F130, F140, M100, M115, M135
12	S.76538 Hydraulic Filter - Charge Pump	81863799	F100, F110, F115, F120, F130, F140, M100, M115, M135, M160
13	S.76803 Hydraulic Filter	82005016	M100, M115, M135, M160

Please see Index for alternative O.E. part numbers.

These parts are Sparex parts and are not manufactured by the Original Equipment Manufacturer. Original Equipment Manufacturers names, part numbers and descriptions are quoted for reference purposes only.