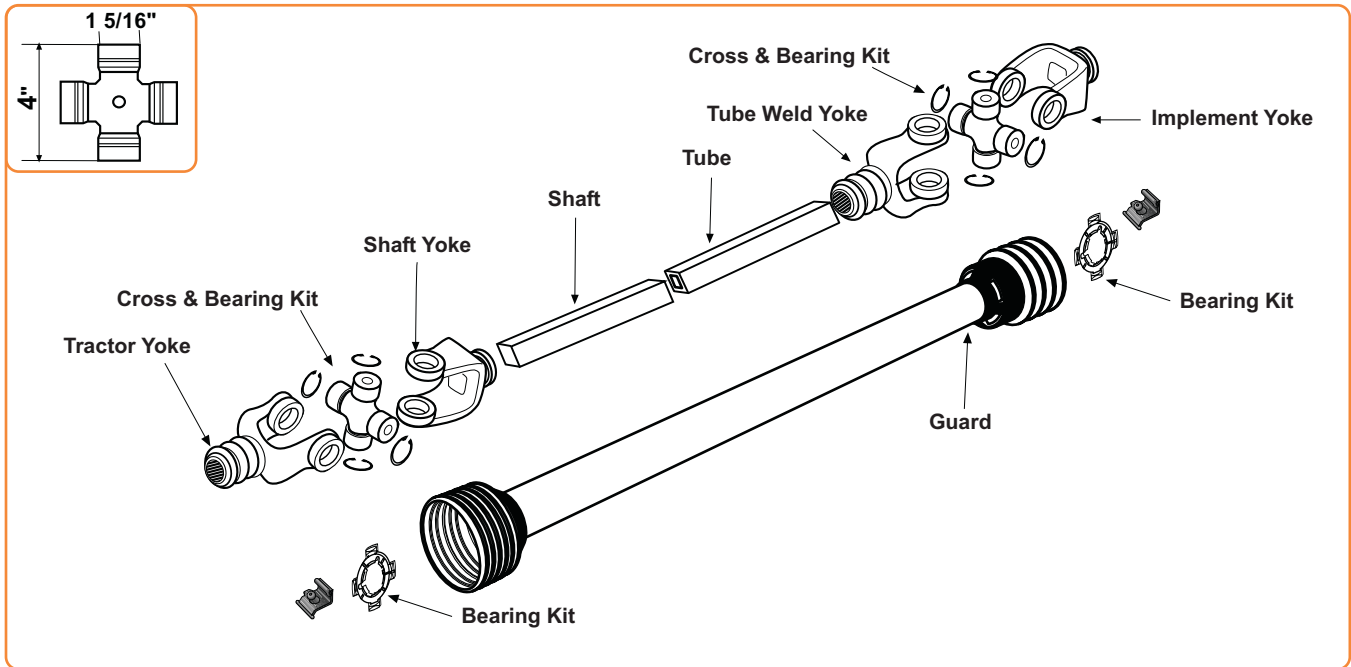


44 Series

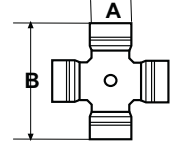


Tractor Yoke Safety Slide Lock



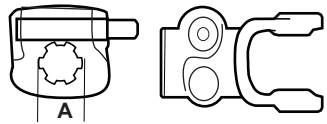
Stock Number	A Bore	Spline
S.100-4406	1 3/8"	6
S.100-4421	1 3/8"	21

Cross & Bearing Kit - Internal Lock



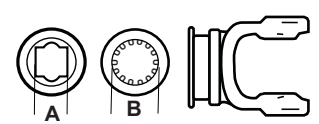
Stock Number	A	B
S.200-4400	1 5/16"	4"

Tractor Yoke Quick Disconnect



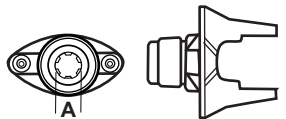
Stock Number	A Bore	Spline
S.102-4406	1 3/8"	6
S.102-4420	1 3/4"	20
S.102-4421	1 3/8"	21

Shaft Weld Yoke With Bearing Groove



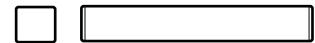
Stock Number	A Bore	B Bore	Spline
S.300-4400	1 5/16" Square	-	-
S.302-4400	-	1 11/16"	20

Tractor Yoke Ball Shear Device with Spring-Lok



Stock Number	A Bore	Spline	Shear Bolt
S.104-4406	1 3/8"	6	3/8" x 16 Gr. 5

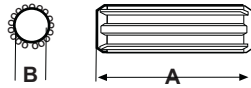
Shaft 1 5/16" Square



Stock Number	Length
S.400-0021	6'

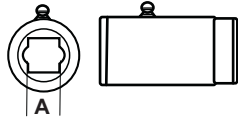
44 Series

Spline Shaft
1 11/16" x 20 Spline



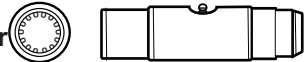
Stock Number	A Length	B Bore
S.404-2120	3'	1 5/16" x 20
S.404-2720* (*Induction Hardened)	3'	1 11/16" x 20

Slip Sleeve -
1 5/16" Square
with Grease Groove



Stock Number	Length	Fits Tube Size B
S.500-4400	5"	2 1/2" (.134 Wall)

Slip Sleeve -
With Grease Reservoir



Stock Number	Length	Bore	Fits Tube Size
S.502-3500	6"	1 5/16" x 20	2 1/2" (.134 Wall)
S.503-3500	8"	1 11/16" x 20	2 1/2" (.134 Wall)

Tube



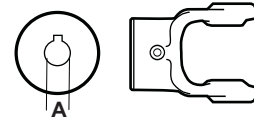
Stock Number	Length	Fits Tube Size
S.602-4400	6'	2 1/2" (.134 Wall)

Tube Weld Yoke -
with Bearing Groove



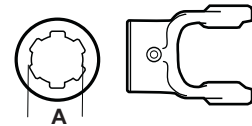
Stock Number	A Bore
S.701-4400	2 1/2" (.120 Wall)

Implement Yoke -
Round Bore
With Keyway &
Set Screw



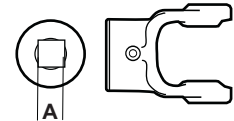
Stock Number	A Bore	Standard Keyway
S.800-4420	1 1/4"	1/4"
S.800-4422	1 3/8"	5/16"
S.800-4423	1 7/16"	3/8"
S.800-4424	1 1/2"	3/8"
S.800-4426	1 5/8"	3/8"
S.800-4428	1 3/4"	3/8"
S.800-4432	2"	1/2"

Spline Bore -
With 21/64" Pin Hole



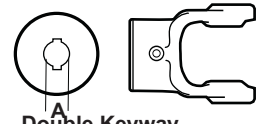
Stock Number	A Bore	Spline
S.801-4406	1 3/8"	6
S.801-4421	1 3/8"	21

Square Bore
With Set Screw



Stock Number	A Bore
S.804-4418	1 1/8"

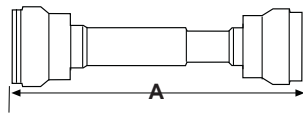
Round Bore
Double Keyway &
Set Screw



Stock Number	A Bore	Double Keyway
S.806-4420	1 1/4"	5/16" & 1/4"
S.806-4422	1 3/8"	5/16" & 1/4"
S.806-4424	1 1/2"	5/16" & 3/8"

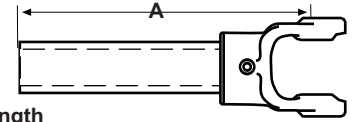
44 Series

**Guard - 350
Plastic
(Use Bearing Kit
S.22569)**



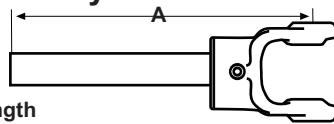
Stock Number	A Length
S.59613	29 1/2"
S.59614	39 1/2"
S.59615	51 1/2"

**Yoke, Tube & Sleeve Assembly
1 5/16" Square**



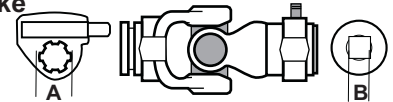
Stock Number	A Length
S.11004448	33 5/8"
S.11004460	45 5/8"

**Yoke & Shaft Assembly
1 5/16" Square**



Stock Number	A Length
S.10004448	33 1/8"
S.10004460	45 1/8"

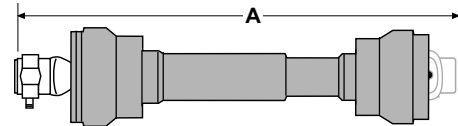
**Universal Joint - Quick Disconnect
to Shaft Weld Yoke**



Stock Number	A Length	B Bore
S.15064400	1 3/8" x 6	1 5/16" Square

Driveline

Driveline is furnished without Cross & Bearing Kit and Implement Yoke. Select kit and Implement Yoke as required. When Cross & Bearing Kit and Implement Yoke are assembled, the overall compressed length of the driveline will be 48".



Stock Number	Tractor Yoke	A Length
S.14004448	1 3/8" x 6 Quick Disconnect	48"

Bearing Kit - 250

Stock Number	Kit Contains
S.22567	2 x A=52.8mm ID Bearings, 2 x S.56509 Nipple Locks

